

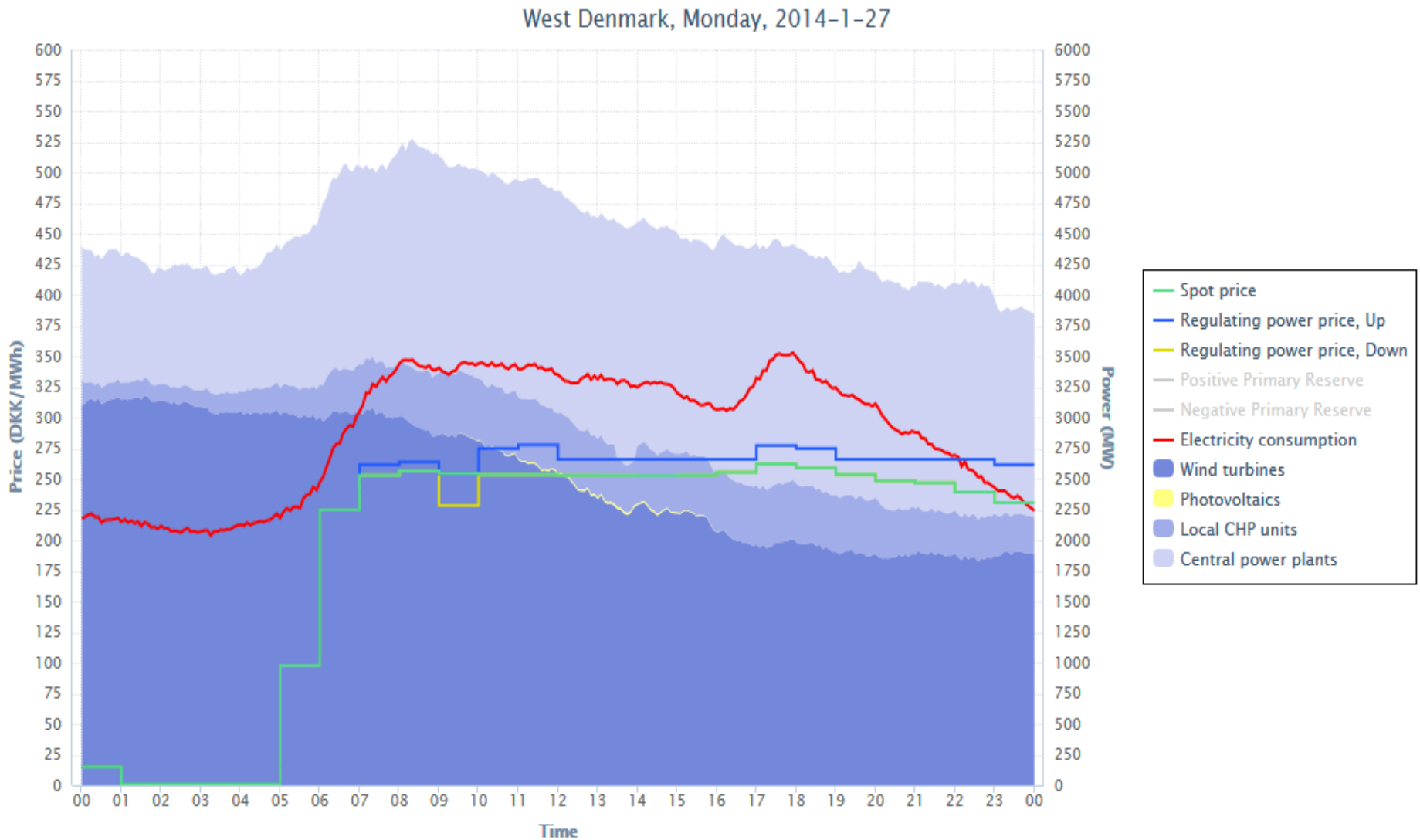
KICKOFF-meeting in CITIES, 29-1-2014

**Market based adaption of flexible energy plants for the
energy supply of CITIES**

*Anders N. Andersen, EMD International A/S
ana@emd.dk*



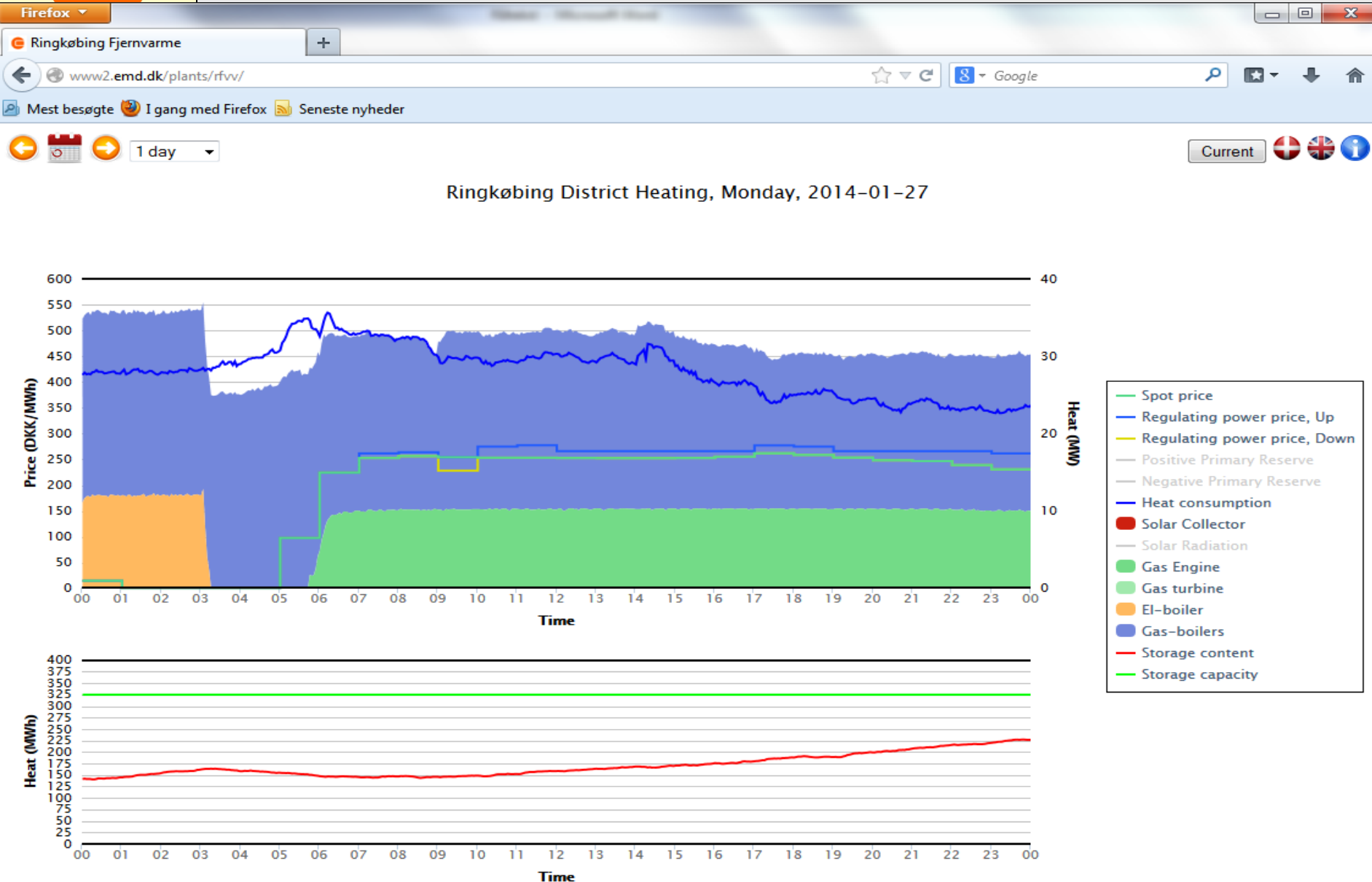
In 5 hours 27-1-2014 the spotprice was next to 0.



This graph is hosted and maintained by EMD International A/S



Question 1: Why did the electrical boiler in Ringkøbing only operate in 3 hours that day and not in 5 hours ?





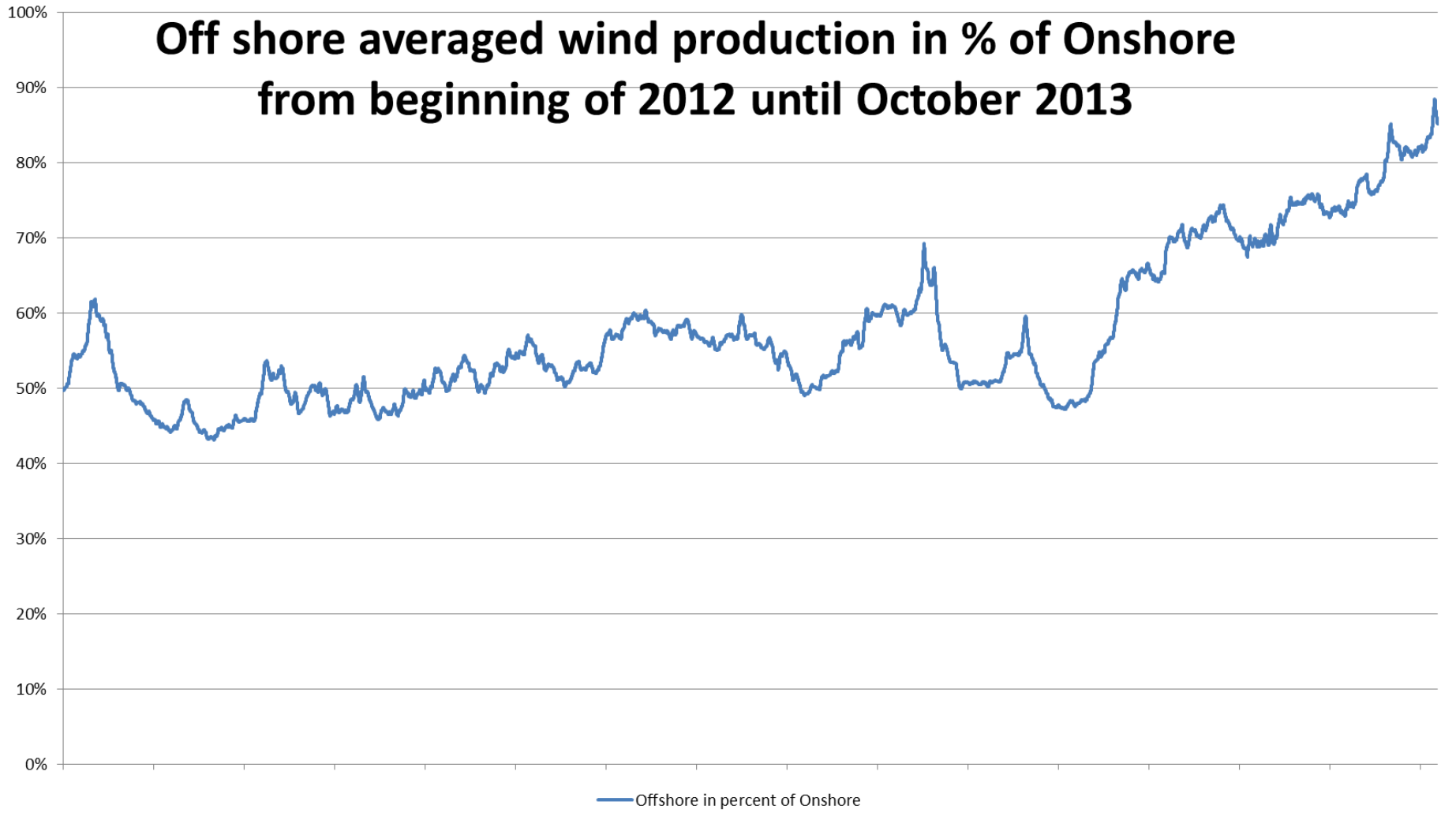
I will in my presentation address a few of the focus areas in CITIES

- Current operational, control and market frameworks are poorly suited for renewable integration.
- Increased flexibility within the system through storage, substitution of energy carriers and flexibility of consumption.
- Develop methodologies and IT solutions for the analysis, operation and development of fully integrated urban energy systems.
- Identify commercial opportunities within the smart cities.



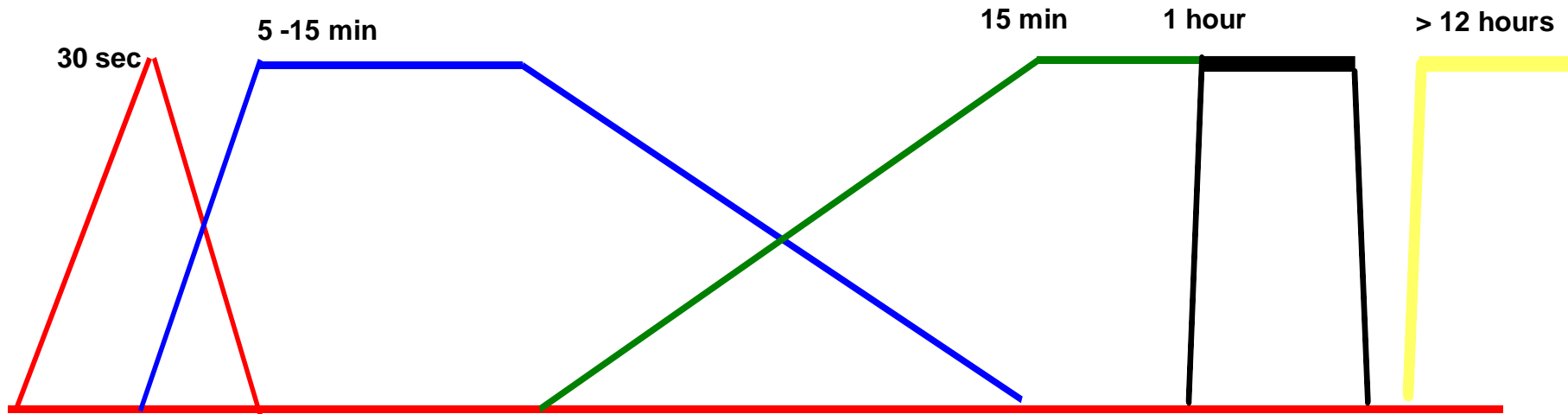
An important starting point is that CITIES have in Denmark to absorb Off shore wind.

Off shore averaged wind production in % of Onshore from beginning of 2012 until October 2013



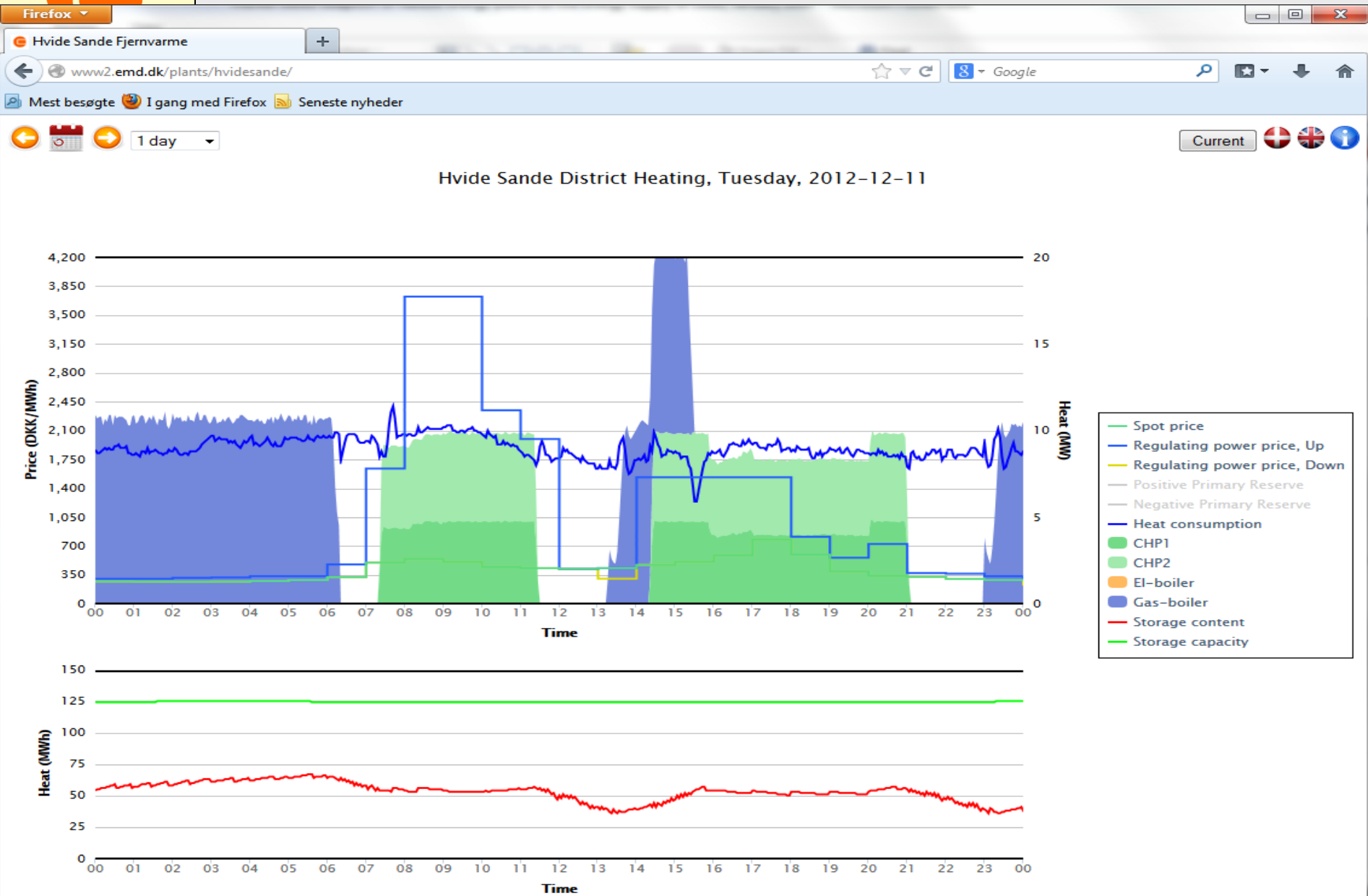
The TSO electricity markets for balancing the electricity system and wind productions

- Frequency containment reserves, Primary reserve**
- Frequency restoration reserves, Secondary reserve**
- Replacement Reserves, Tertiary reserve**
- Intra day wholesale market**
- Day ahead wholesale market**

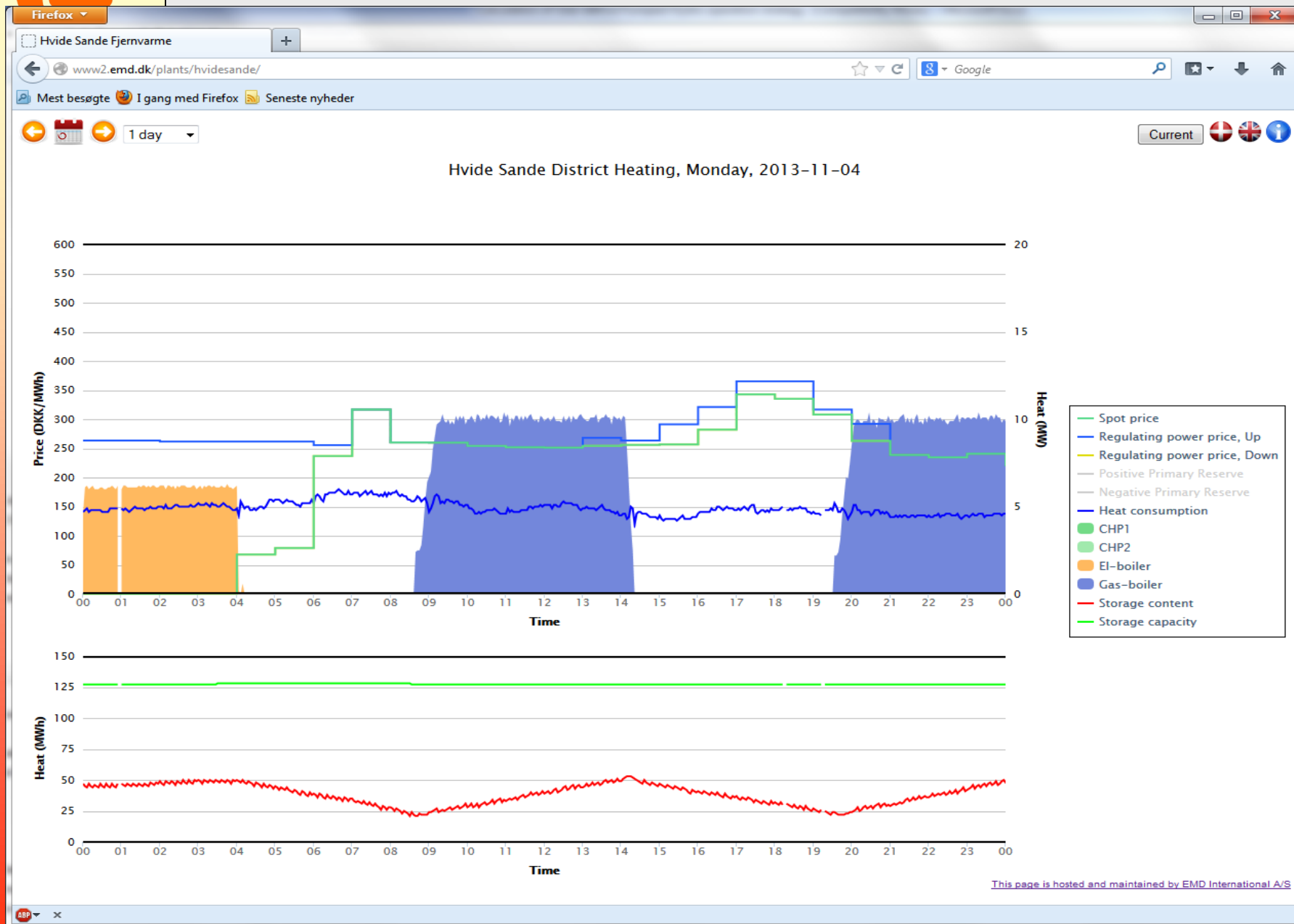




Hvide Sande won trade in Primary reserve market, Regulating power market and spot market that day.



Question 2: Hvide Sande bought electricity in spot for the electrical boiler. Why did it not in these 4 hours then win upward regulation in Reg.m.



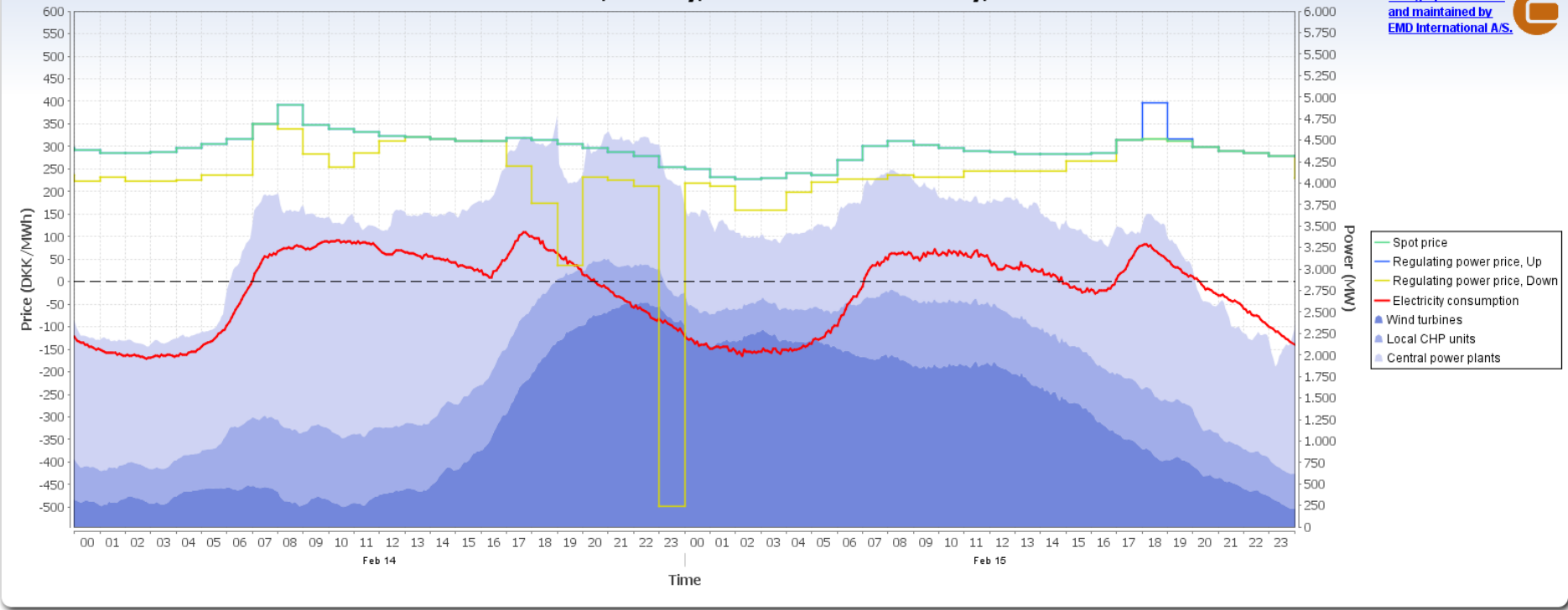


We have in a research project made live test of the economic benefit for a 21 MW wind farm of offering themselves downward regulation to the TSO





<http://emd.dk/el/>



and maintained by
EMD International A.S.



- Spot price
- Regulating power price, Up
- Regulating power price, Down
- Electricity consumption
- Wind turbines
- Local CHP units
- Central power plants

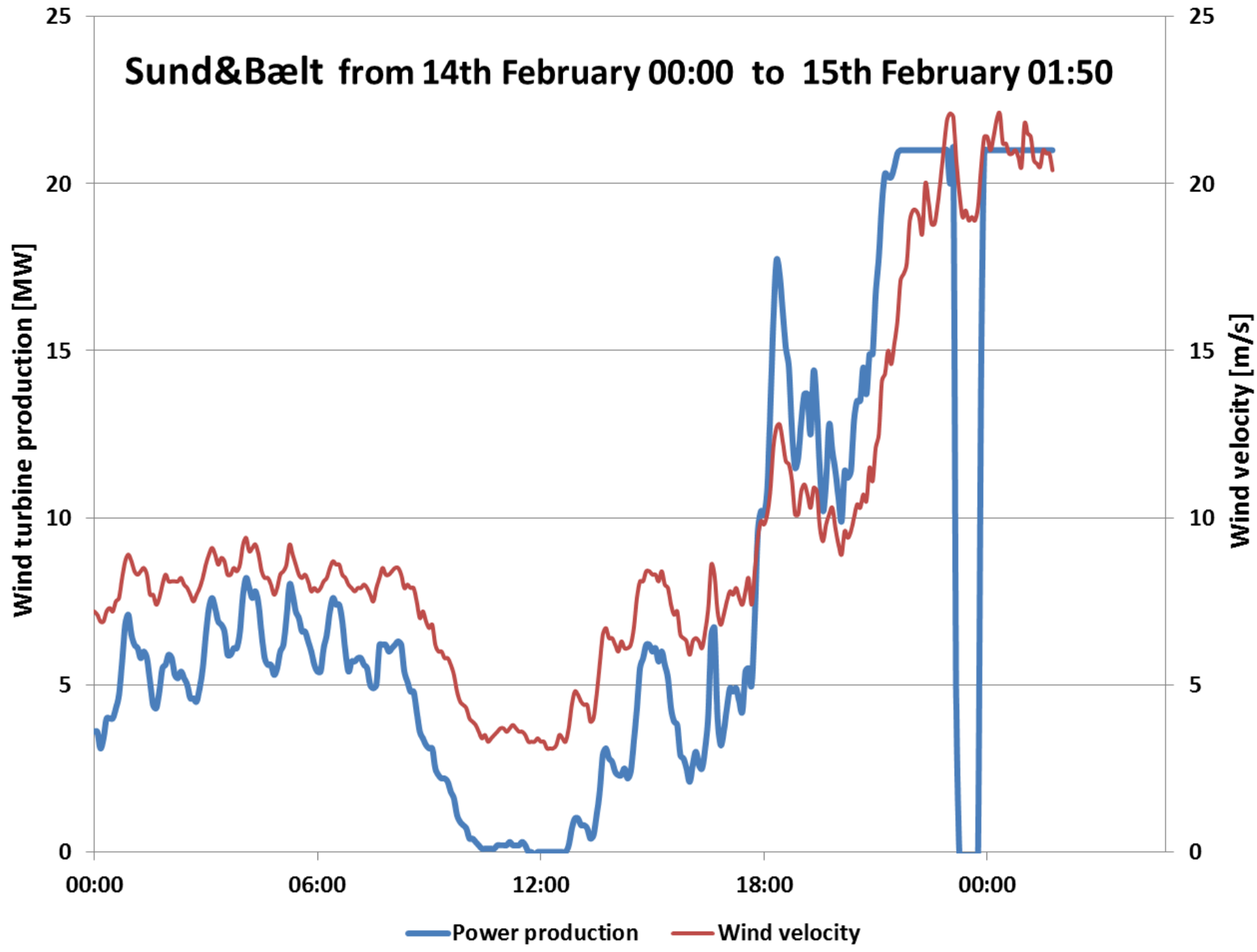
Date: Jan Feb Mar Apr M... Jun Jul Aug Sep Oct Nov Dec Today

Days in Window: 2 Year: 2012

Regulating Power Market Primary Reserve Market

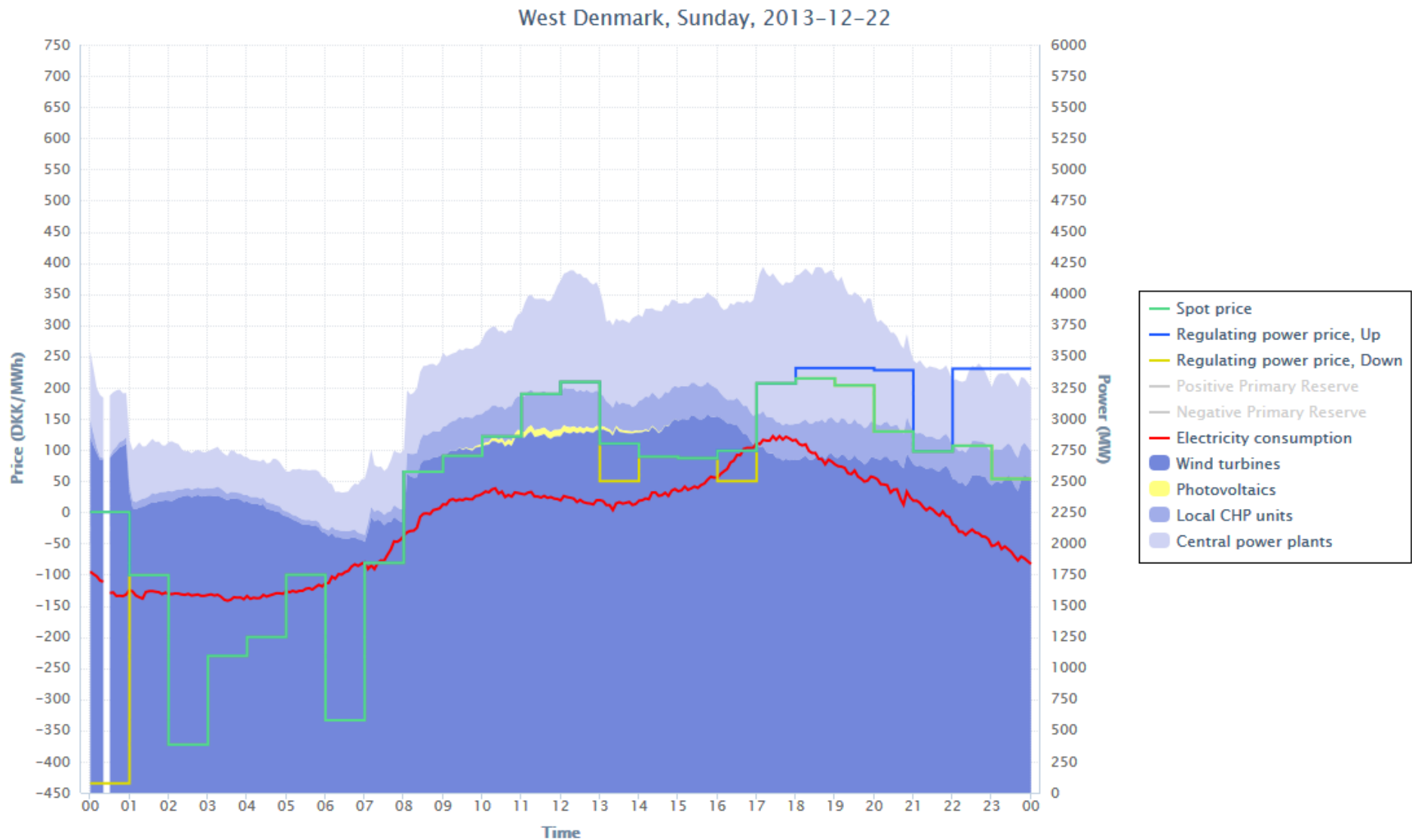
EMD

Sund&Bælt from 14th February 00:00 to 15th February 01:50



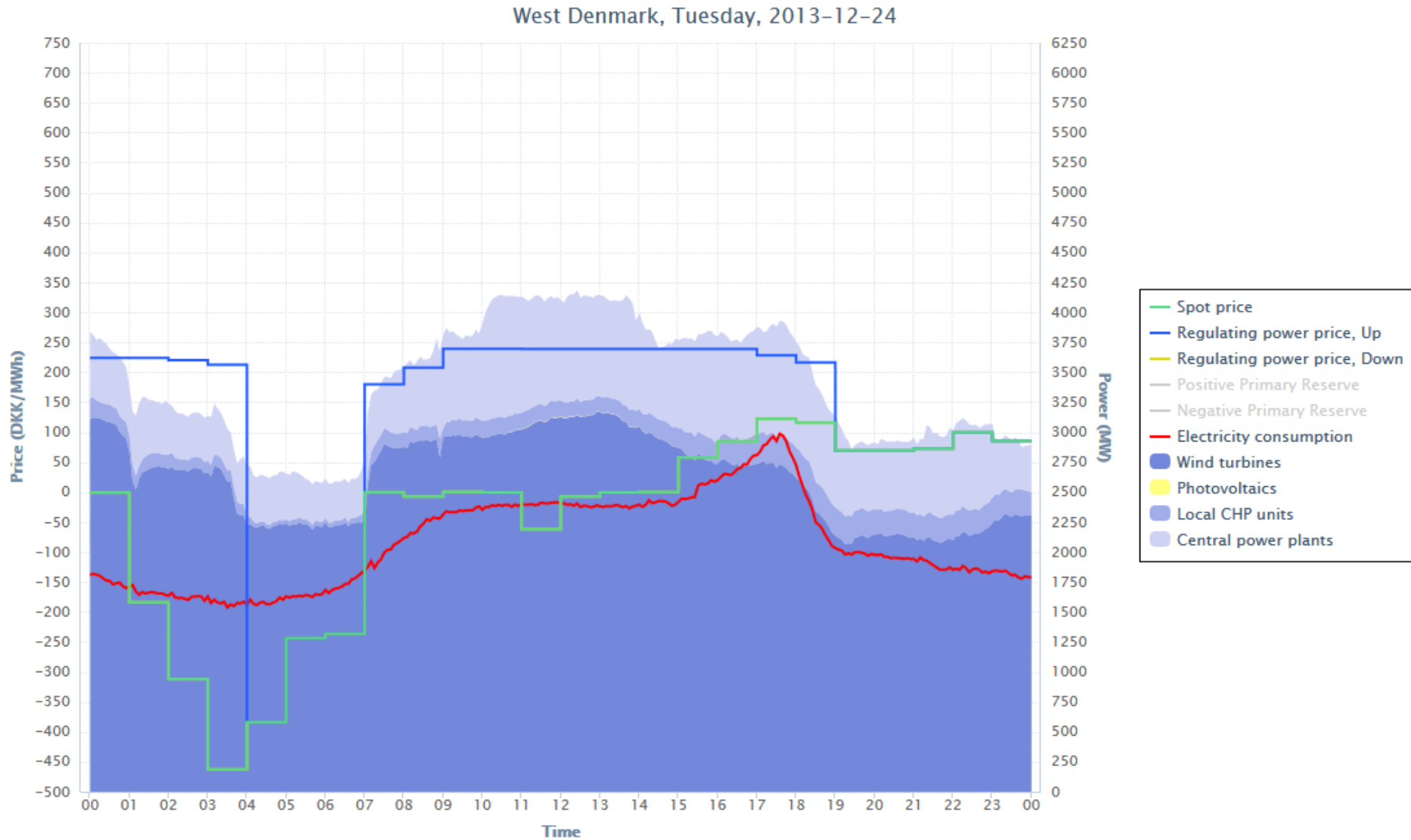


Wind turbines lost trade in spot 22-12-2013 and had to stop for some hours, see www.emd.dk/el

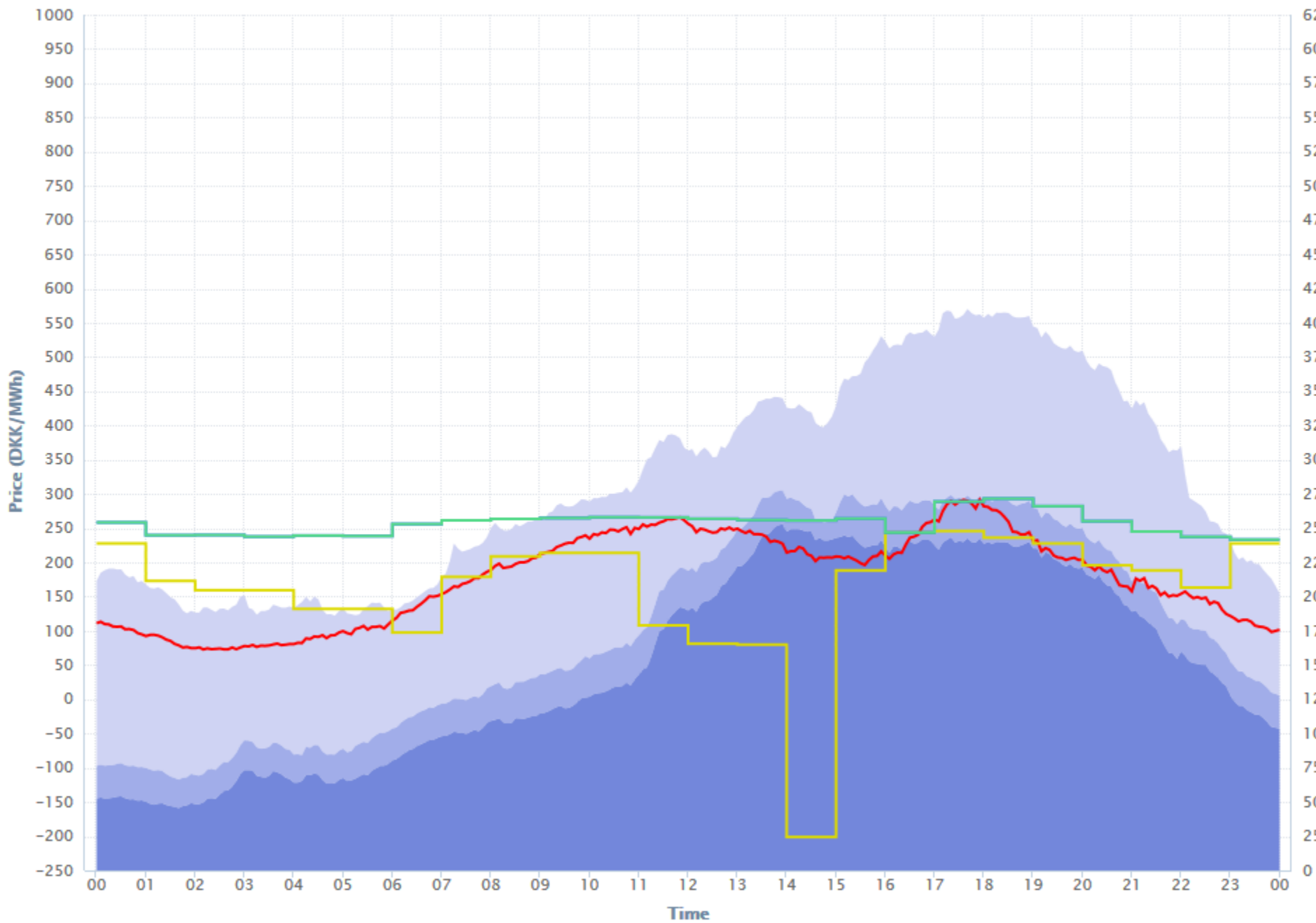


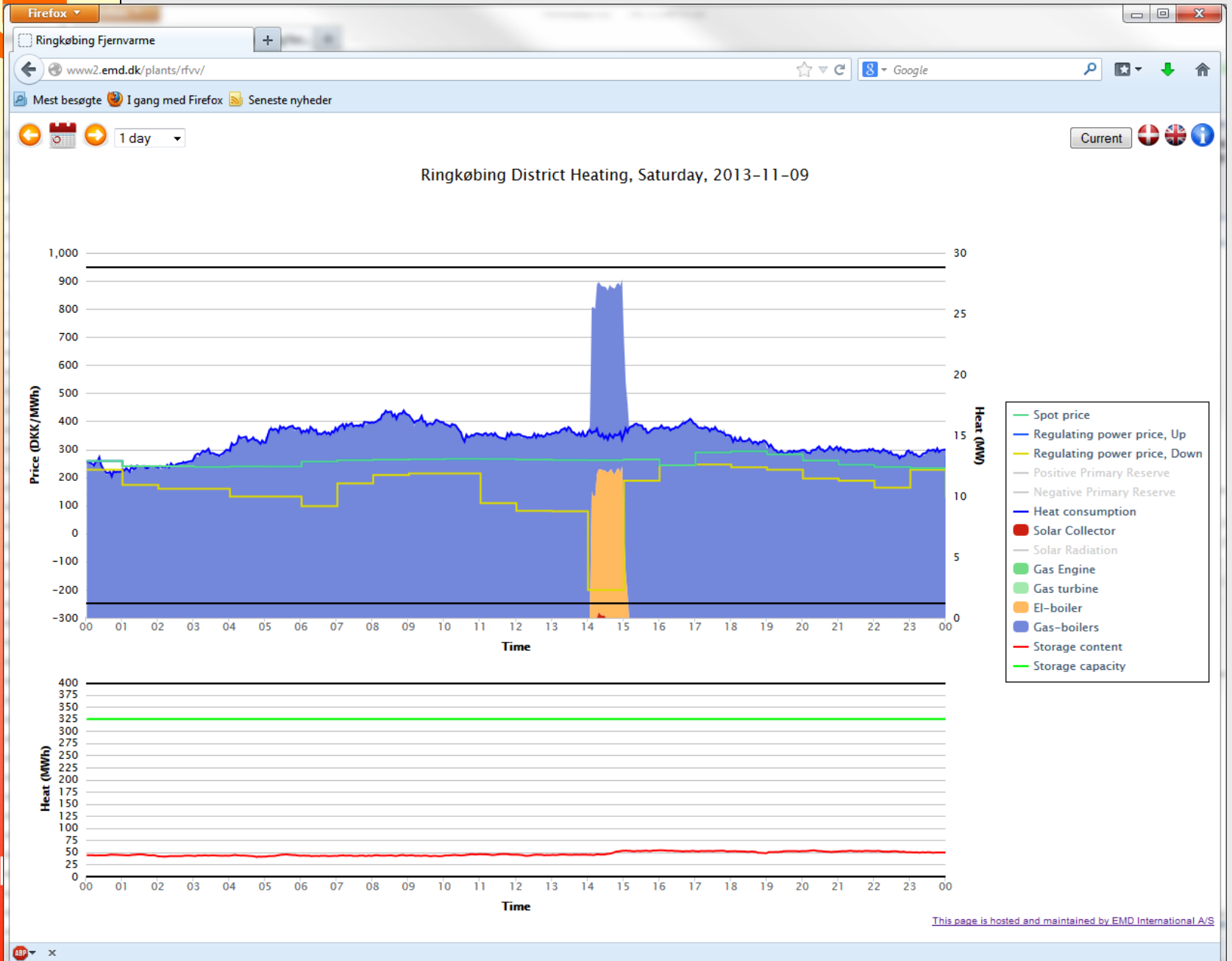


Wind turbines won 24-12-2013 upward regulation in the Regulating power market at 01:00, see www.emd.dk/el.



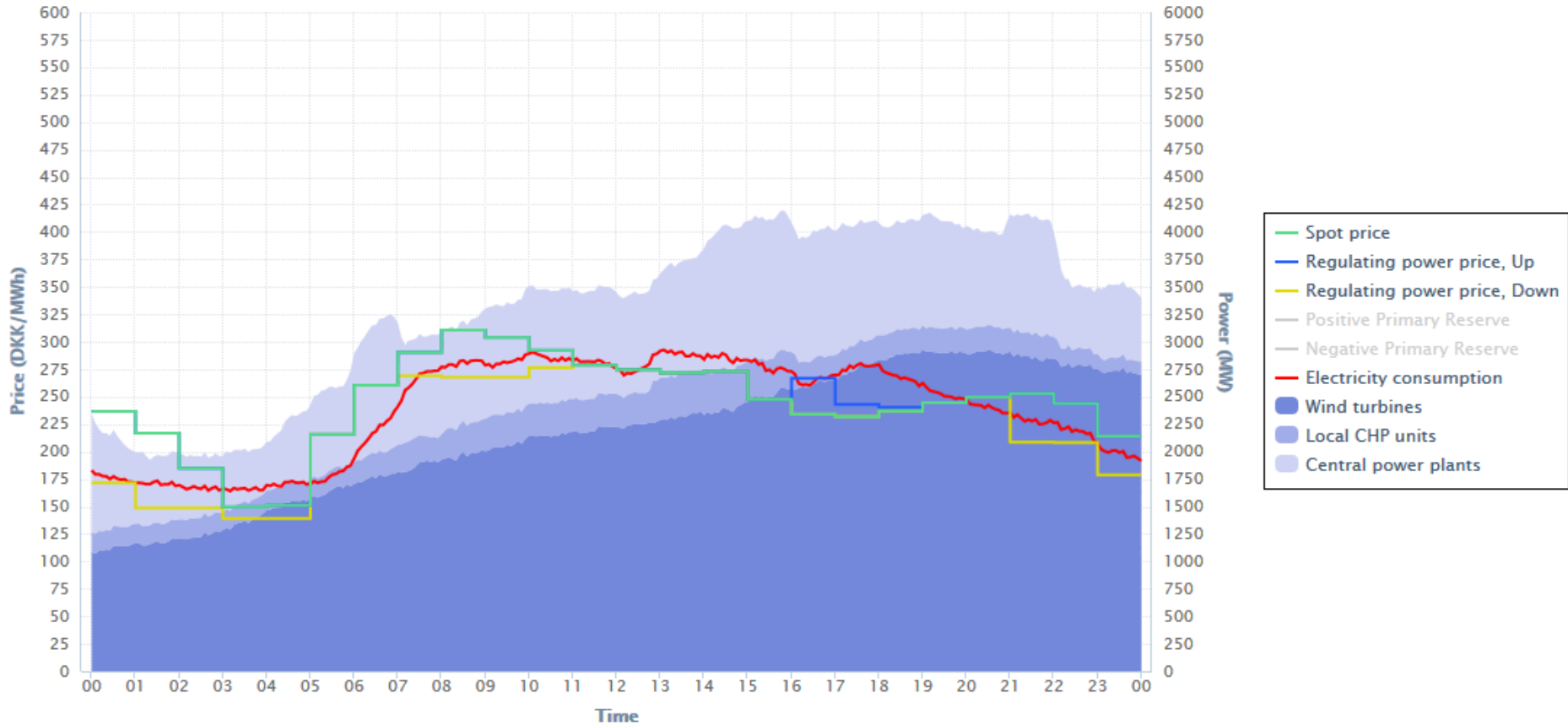
West Denmark, Saturday, 2013-11-9





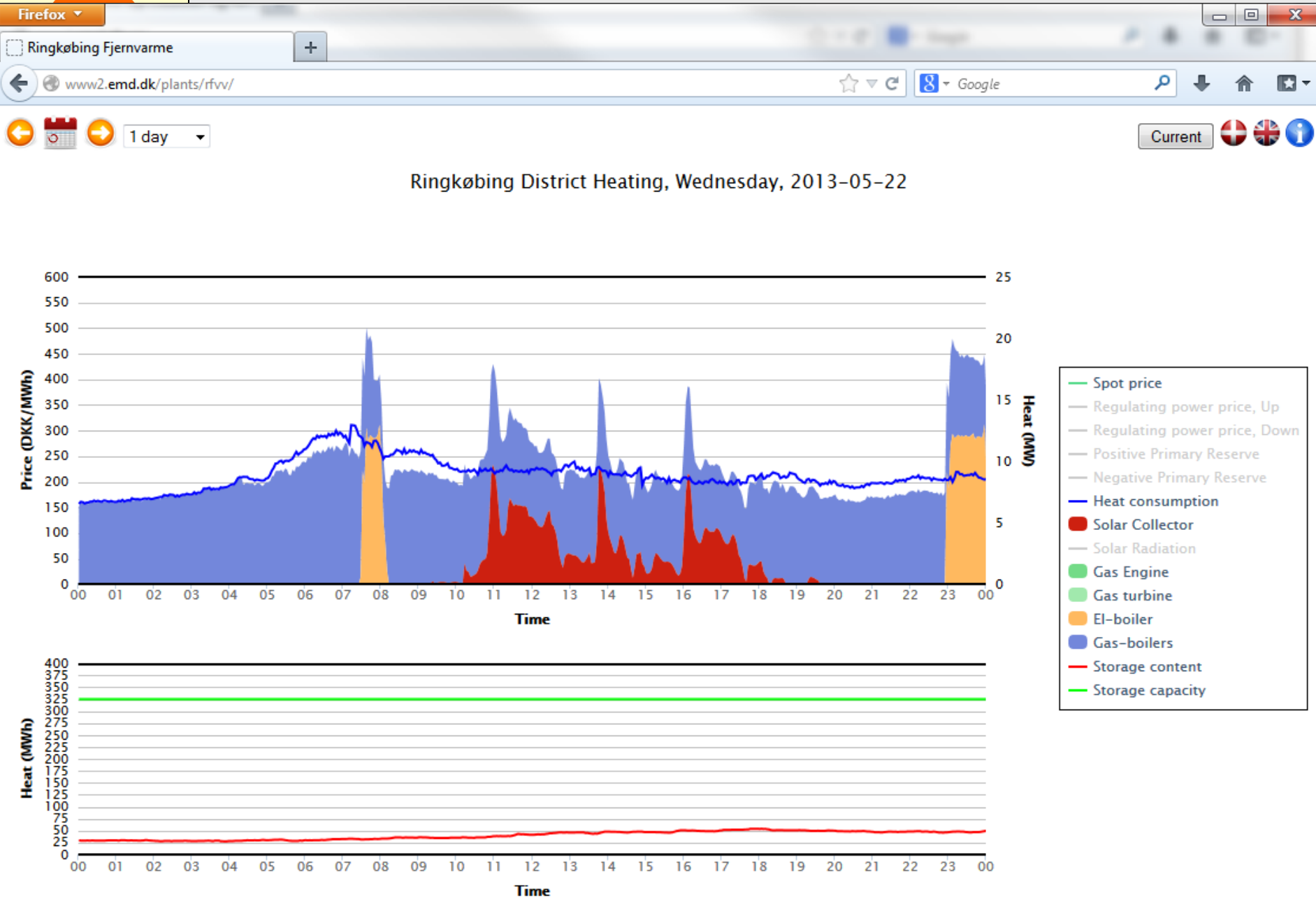


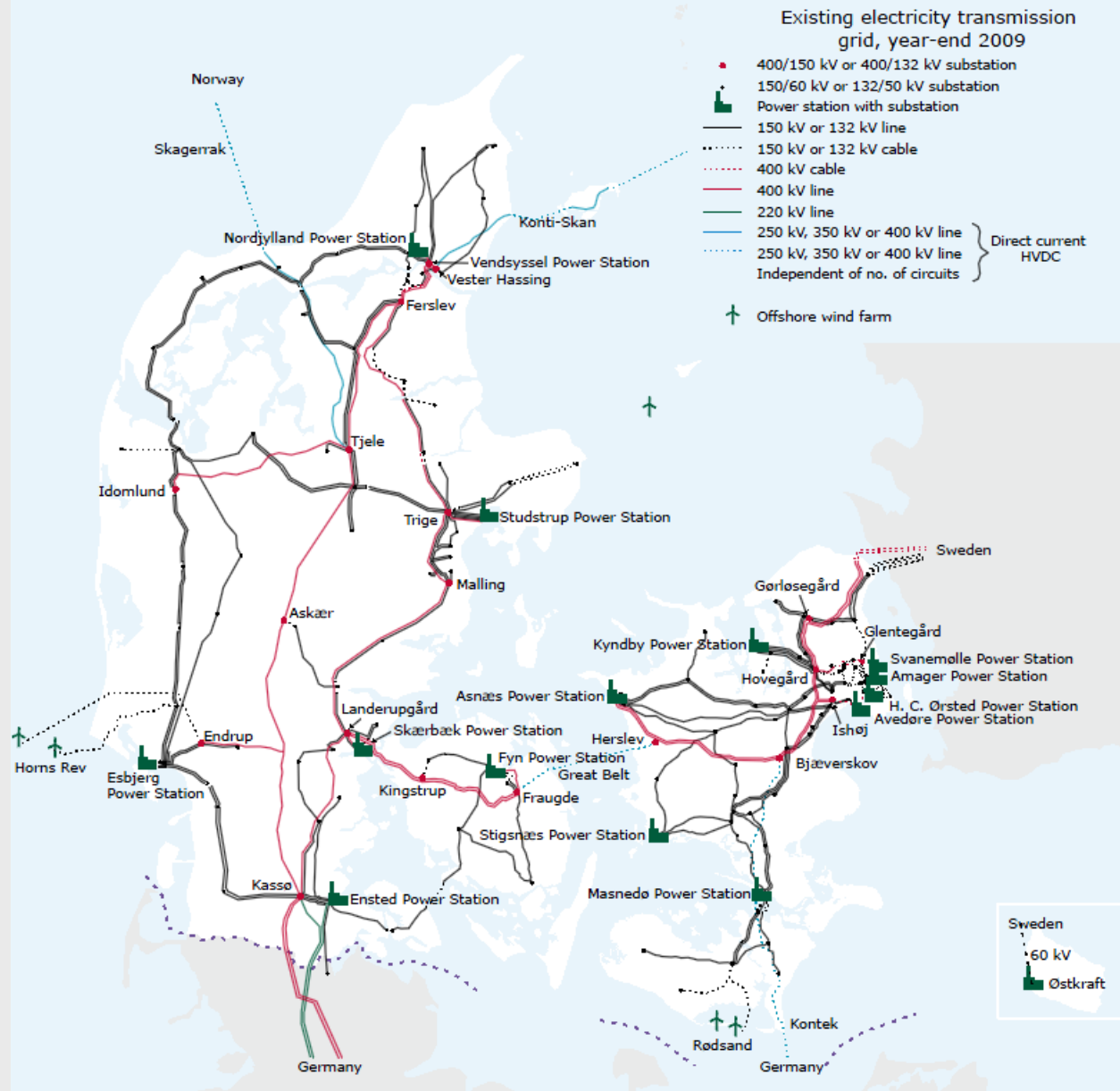
West Denmark, Wednesday, 2013-5-22



This graph is hosted and maintained by EMD International A/S

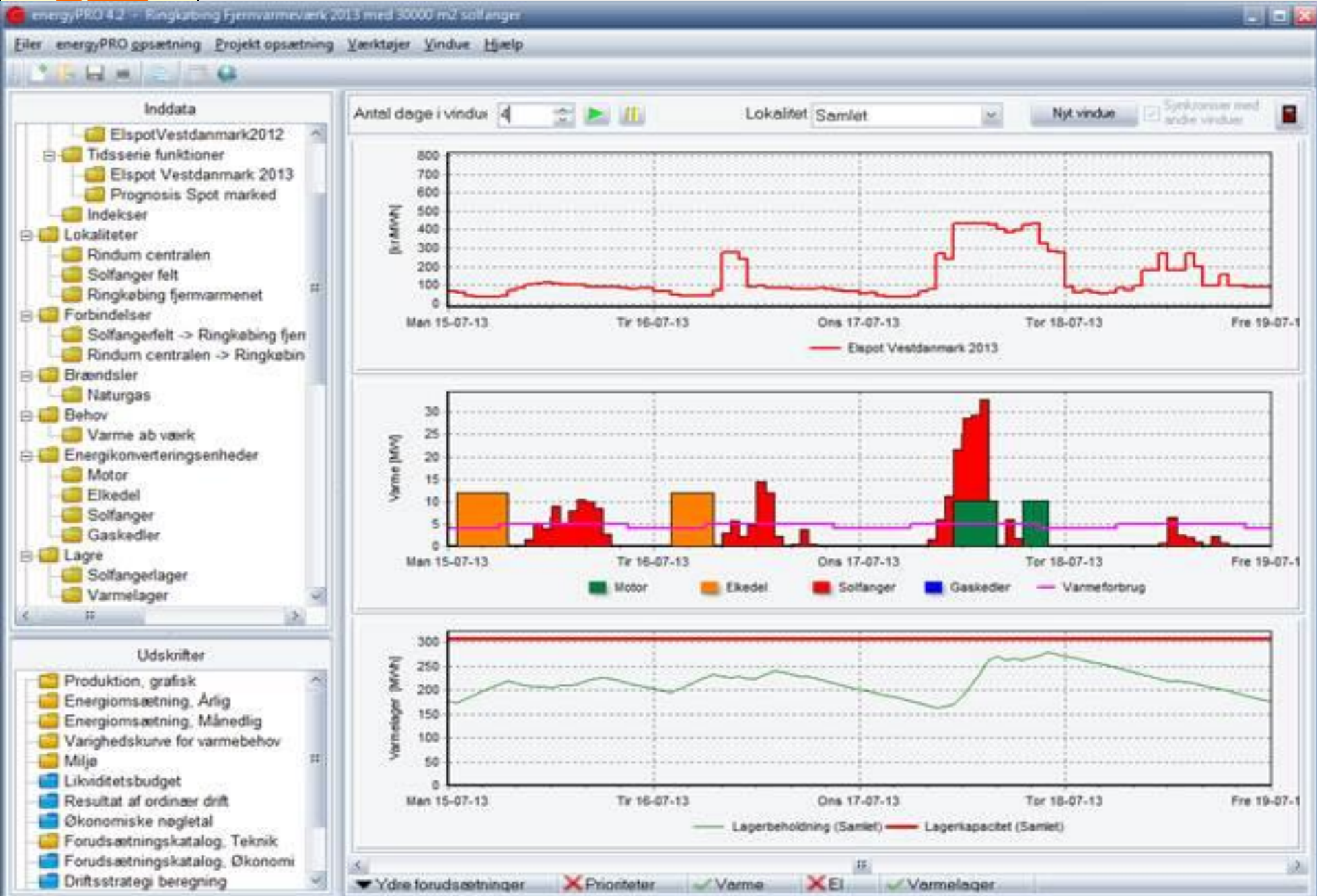
Electrical boilers was activated outside the markets.



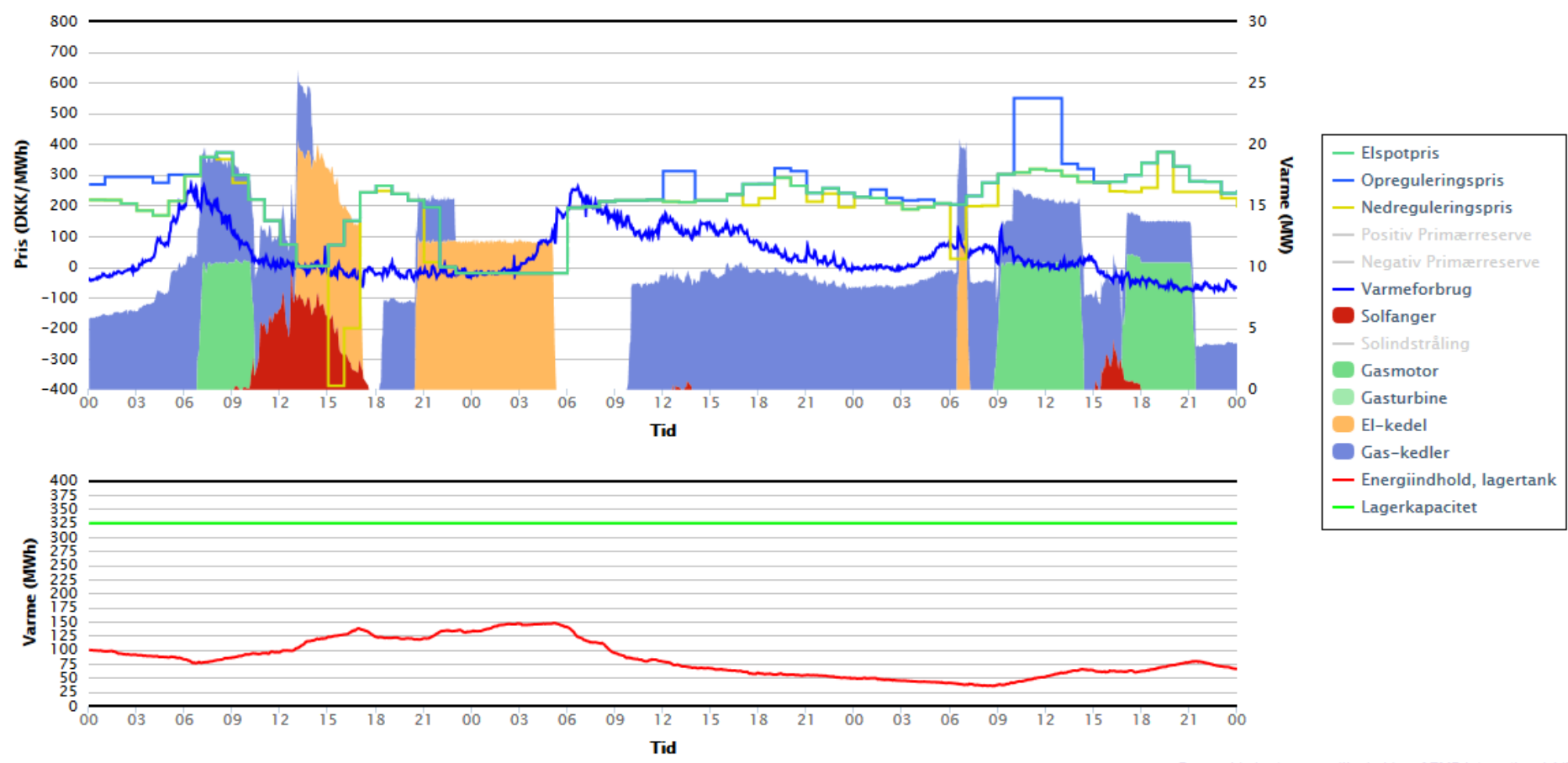




Modeling in energyPRO Ringkøbing CHP-plant.



Ringkøbing Fjernvarmeværk, torsdag, 3. okt 2013 til lørdag, 5. okt 2013





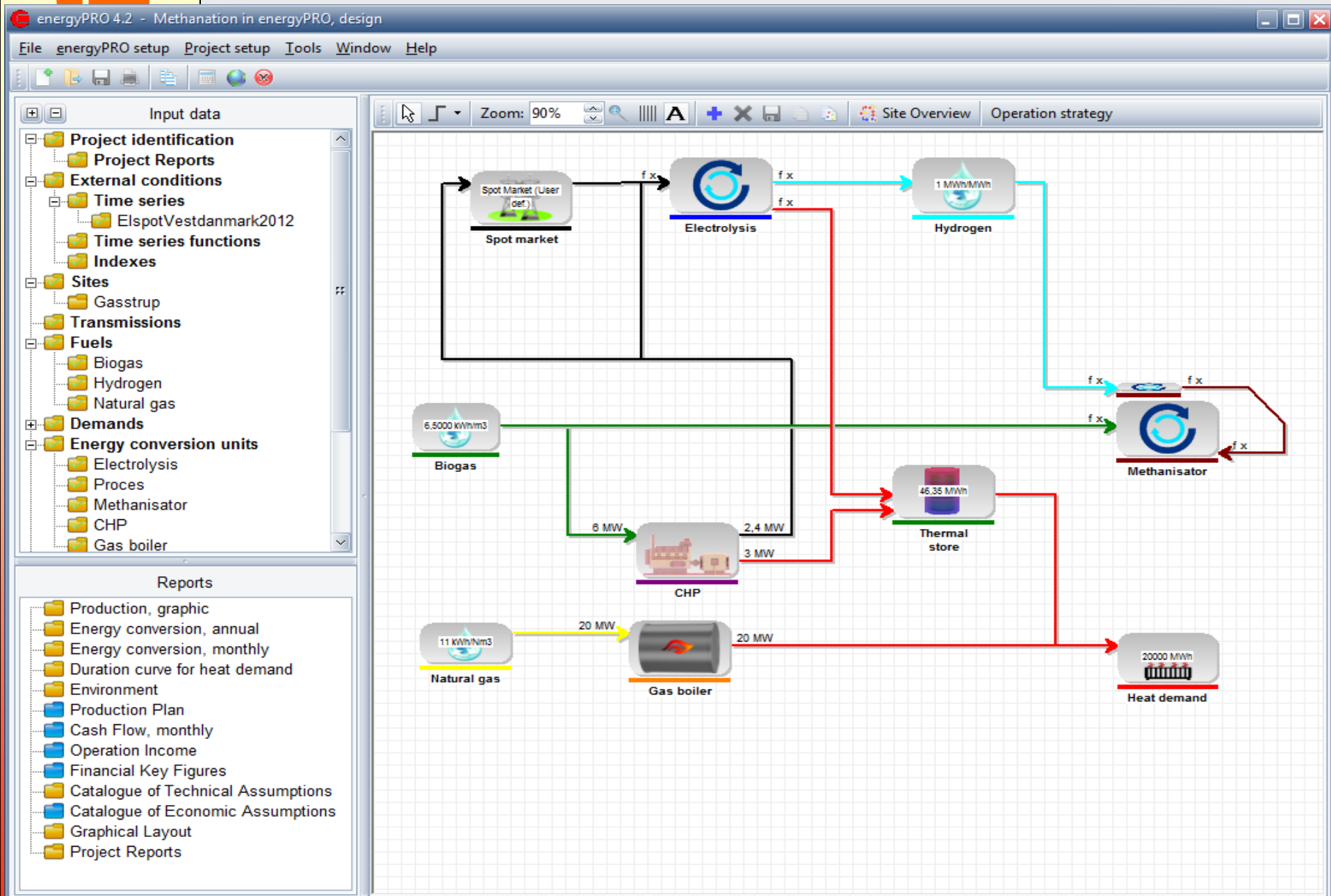
The 12 MW electrical boiler at <http://www.emd.dk/plants/rfv/> is using the net reserves.

This is an example of smart grid operation/DSO-market !!



CITIES: Increased flexibility within the system through storage, substitution of energy carriers and flexibility of consumption.

Modeling in energyPRO methanation plants delivering heat to CITIES.





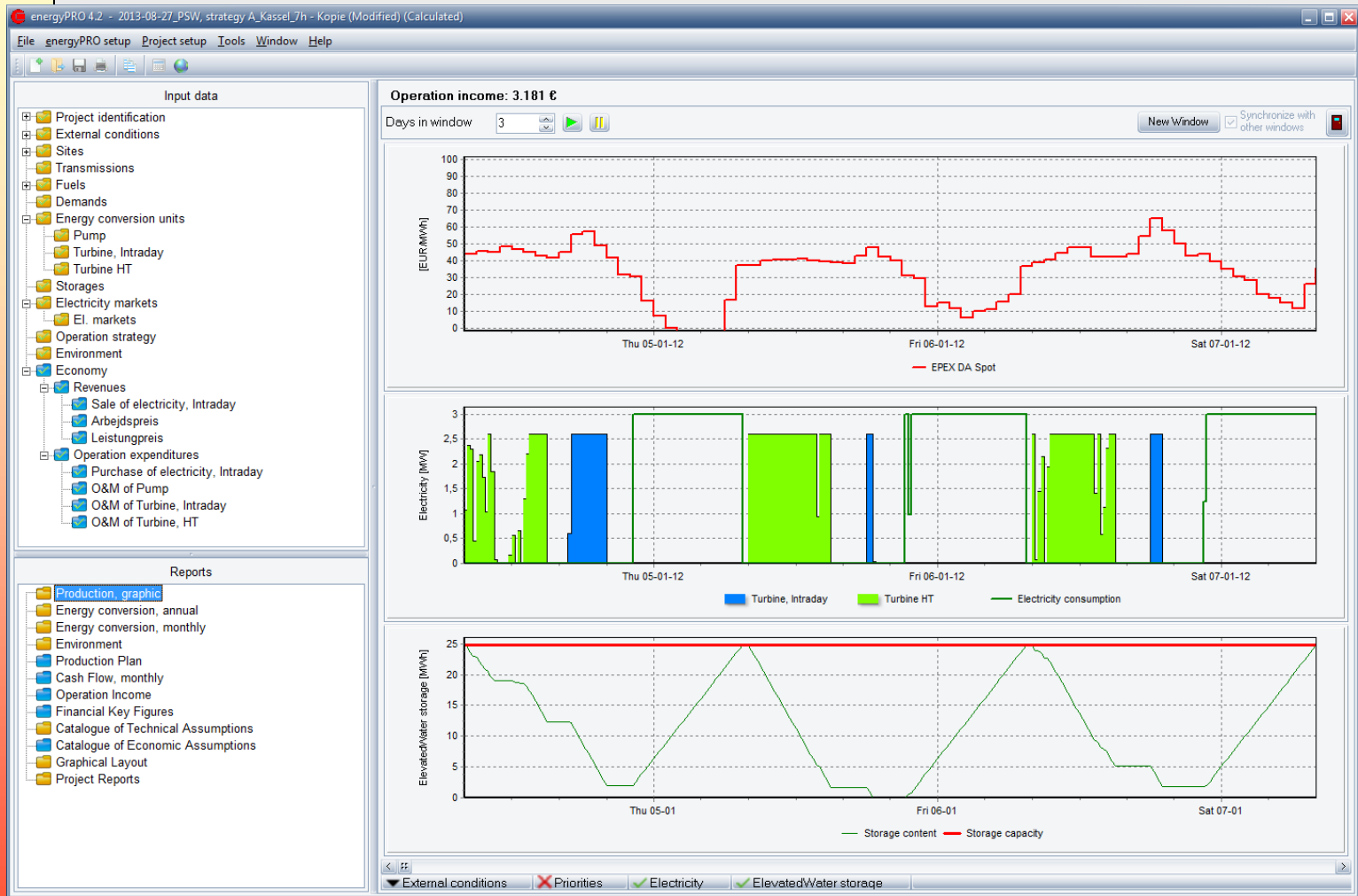
<http://www.store-project.eu/>



EMD



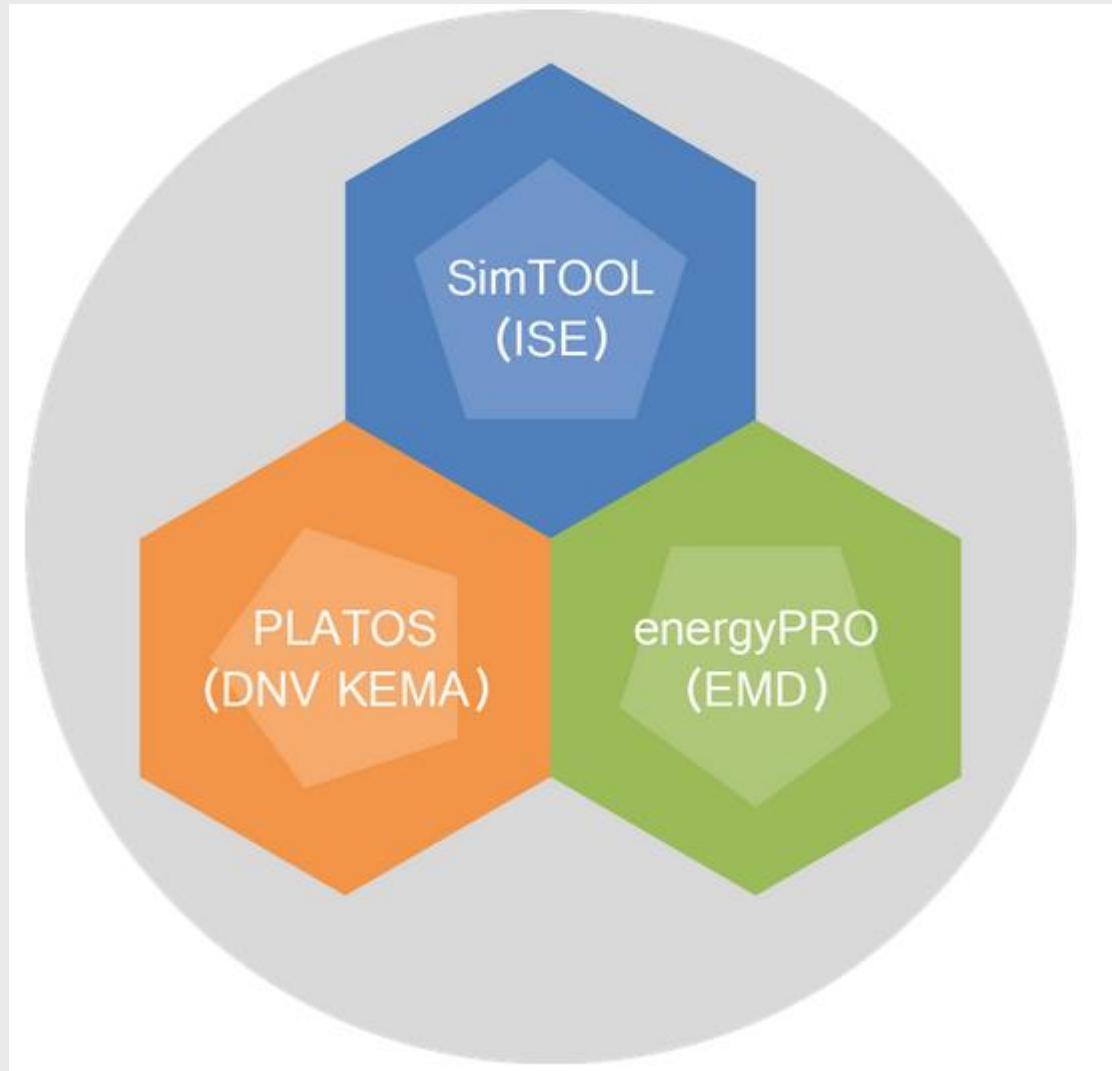
<http://www.store-project.eu/>



EMD



<http://www.nemo-project.eu/>



EMD



Thank you for your attention !

EMD