

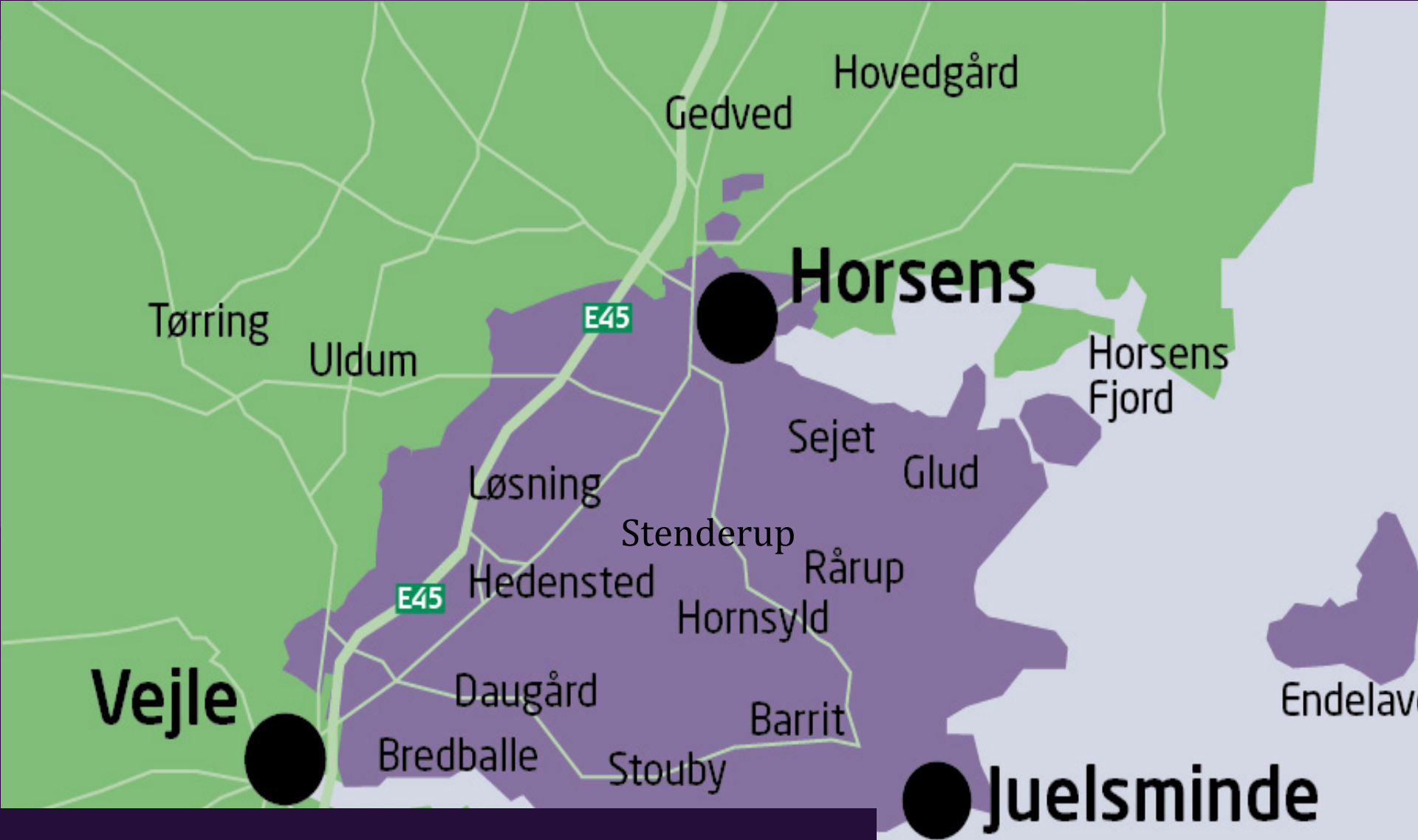
Steps towards a fossile free future in Live Lab Stenderup

Thomas Hune, INSERO Software
2014



INSERO LIVE LAB

New technologies and new knowledge will be developed and tested.



Insero's large, strategic commitment to turn the local area into one big living laboratory in the fields of energy and ICT.

A basis for future projects and activities, where companies and entrepreneurs have a unique opportunity to have their products and services demonstrated in the real world.

Project X

Project Y

Project Z



2009

2011

2013

2015

INSERO LIVE LAB

– a platform for development

Attracting funding
- gearing of
capital

**International
cooperation**
- global markets



**User involvement –
the market is
represented**



**Test platform
for SME's
– the road
to market**

**Building
knowledge and
competences**

**True innovation –
Idea on idea**



**Several
technologies**
- test of interaction





In the first Insero Live Lab project, 20 families in and around the village of Stenderup south of Horsens are participating



INSERO
LIVE LAB



TESTZONE # STENDERUP



The goal:

To test the mutual interaction of the technologies as well as the users' experiences with the technologies. Furthermore, the coherence of the technologies with the entire energy system tested in an area outside the collective district heating.

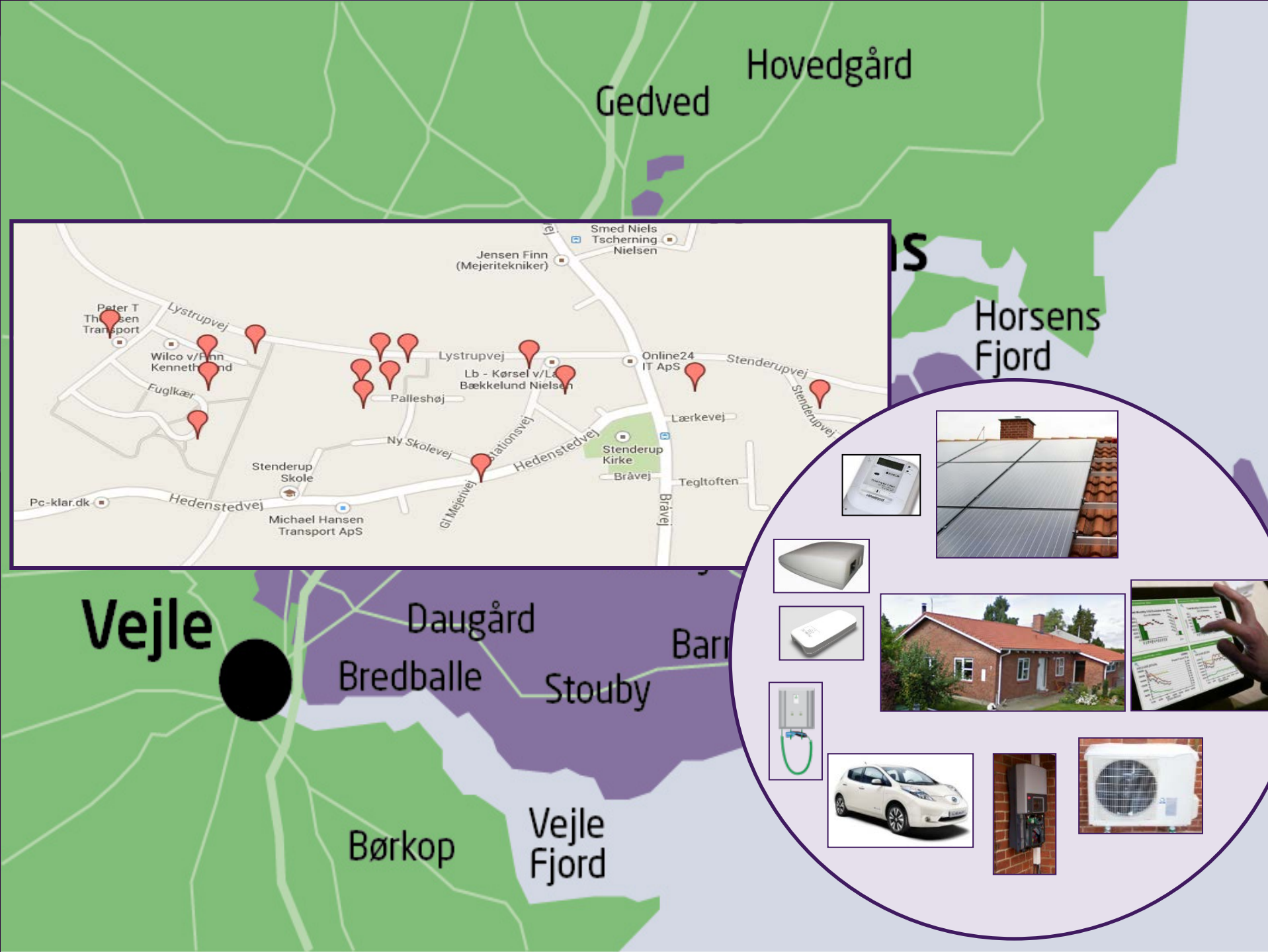
A PART OF FINESCE

FUTURE
INTERNET
SMART
UTILITY
SERVICES

FINESCE



Insero Live Lab is a part of FINESCE (Future INtErnet Smart Utility ServiCEs) – an international, EU-funded project focused on developing the Future Internet for different industries and with trial sites in six European countries, including Denmark.



THE TECHNOLOGIES

– An intelligent interaction



Photovoltaic cells



Heat pump



Solar heating system



Electric car and charger

Measuring equipment for indoor climate

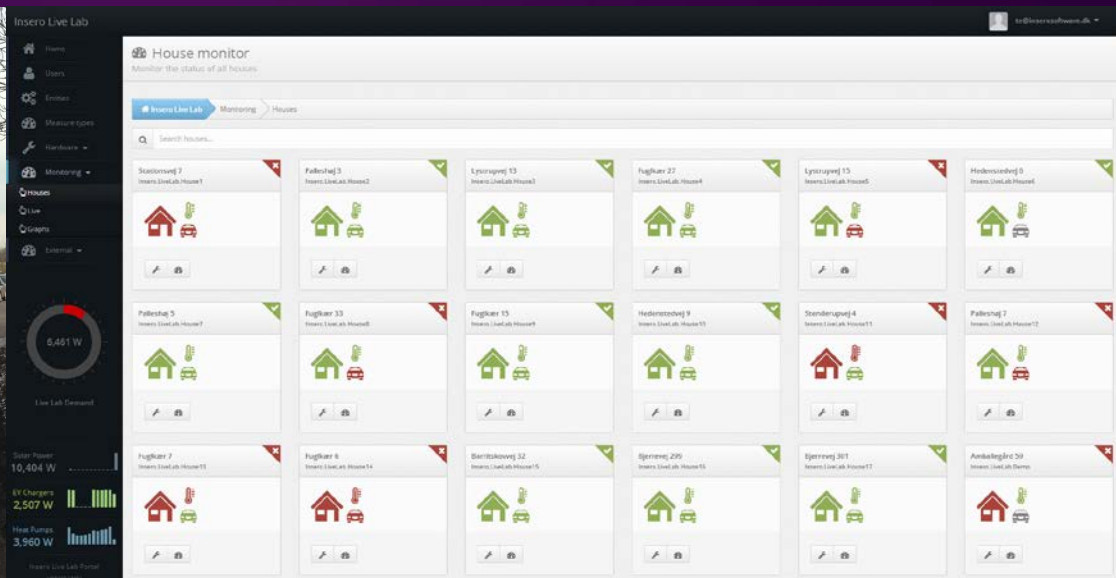


Home Automation



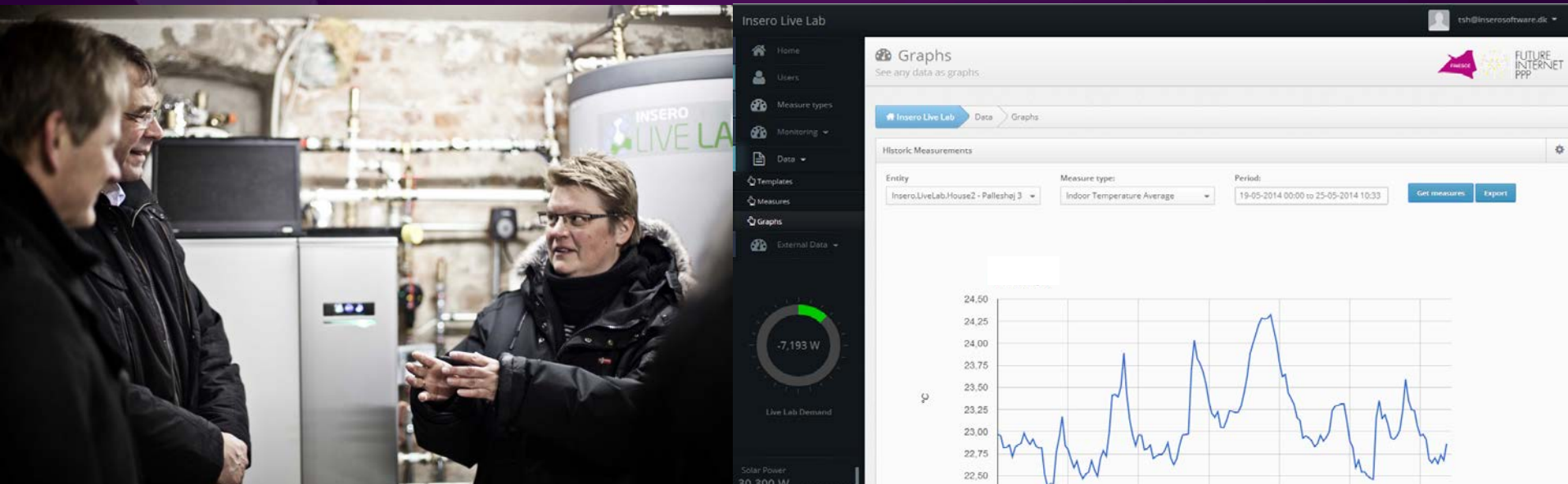
Insero Aggregator Platform

- Insero Software has developed an **aggregator platform** based on Insero Live Lab.
- The platform **monitors** energy consumption and the houses, **controls** the heat pumps and charging of EVs, and **aggregates** the flexibility.
- The platform includes algorithms for optimization of energy consumption with respect to price, CO2 footprint, indoor comfort, and total grid load.

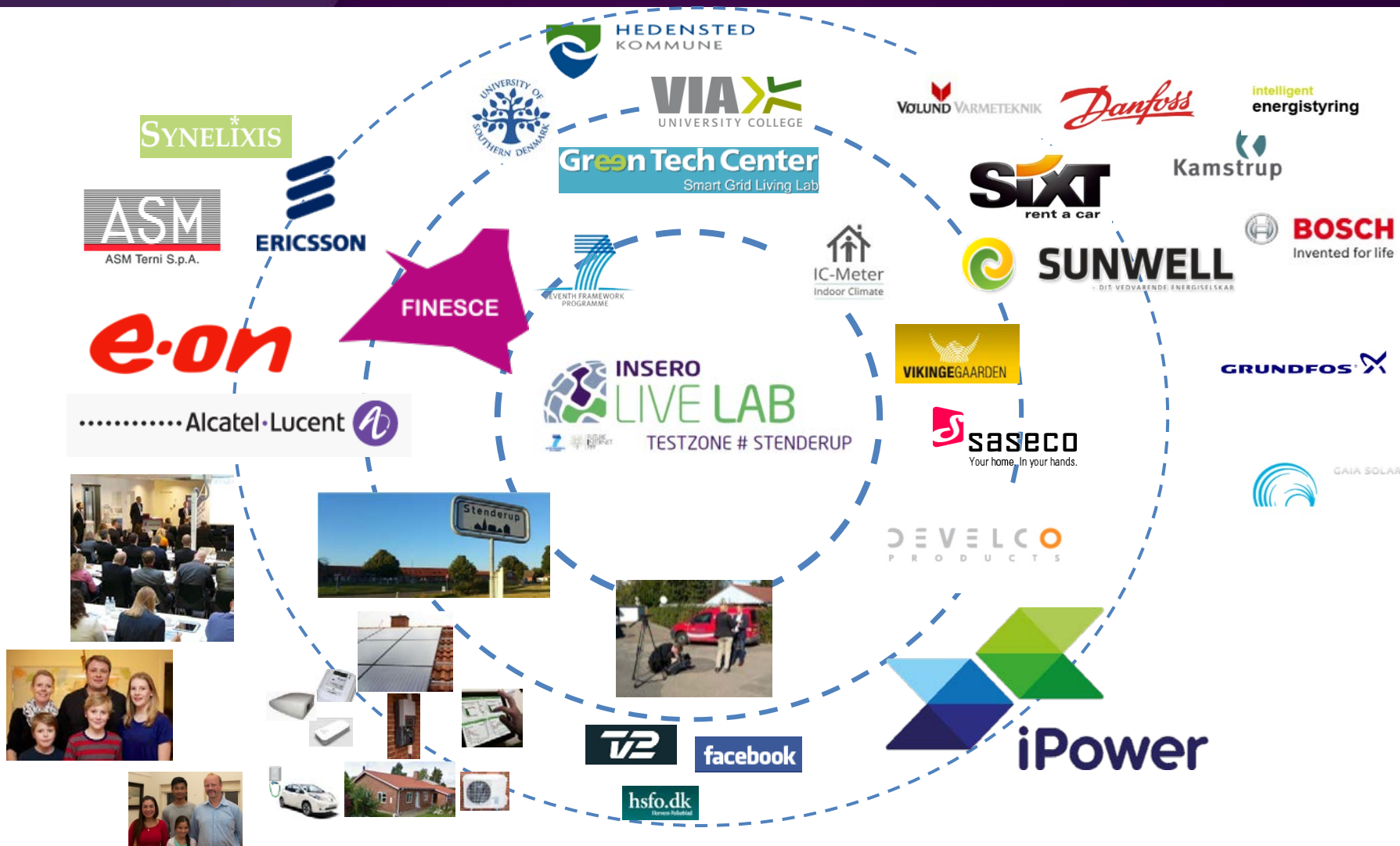


Further testing in Stenderup

- A platform for experimenting with **control strategies** and **energy related services**.
- A **data platform** providing real-time data and historic data.
- Exploring **user interaction** with equipment and services.



OUR DEVELOPMENT PROJECTS GENERATE NEW PARTNERSHIPS



ABOUT INSERO

INSERO – A LOCAL GROWTH GENERATOR

- Areas of investment



Network and
innovation



Research and
development



Companies



Venture

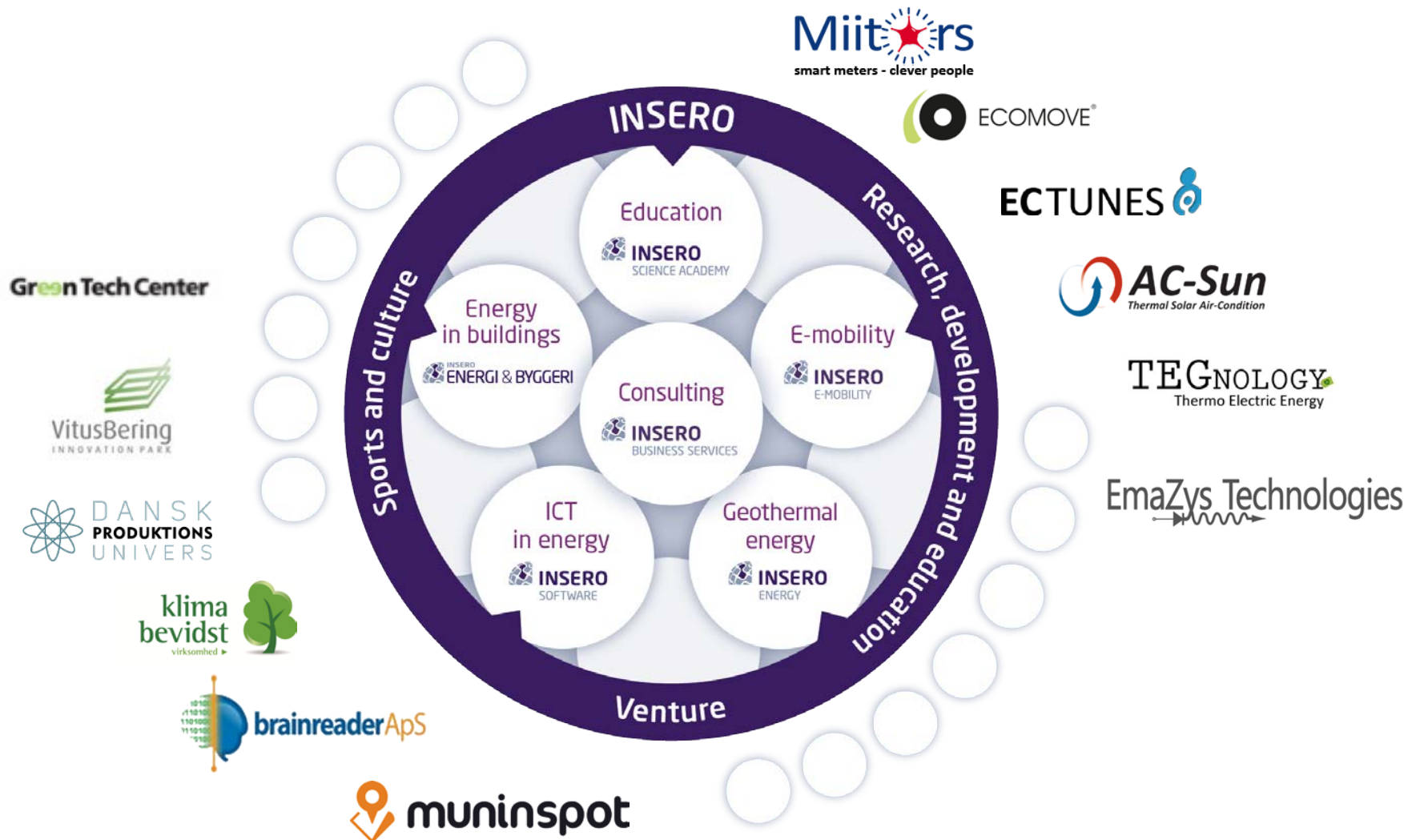
Education



Project-
development



BUSINESS MODEL



THANK YOU

www.inserolivelab.dk